



2. The U.S. Army quickly managed to solve the initial problems, due to the high efficiency of the American war industry.

Match the pictures to the descriptions :

- White camouflage clothing
- Shoe Pac (Mickey Mouse Boots)
- Overshoes
- Wool Overcoat



\_\_\_\_\_



\_\_\_\_\_



\_\_\_\_\_



\_\_\_\_\_



#### 4. Medical supplies in the U.S. Army



The U.S. Army had a carefully planned system to take care of their wounded soldiers. The first measures were taken by the medics, who were present on the battlefield.



Box of morphine with five phials.

The American medics were equipped with phials of morphine, which could be given to very badly wounded soldiers, so that they wouldn't feel any pain.

#### The equipment of a medic



How many phials of morphine could an American medic administer? \_\_\_\_\_



**5. The suffering of the civilian population**

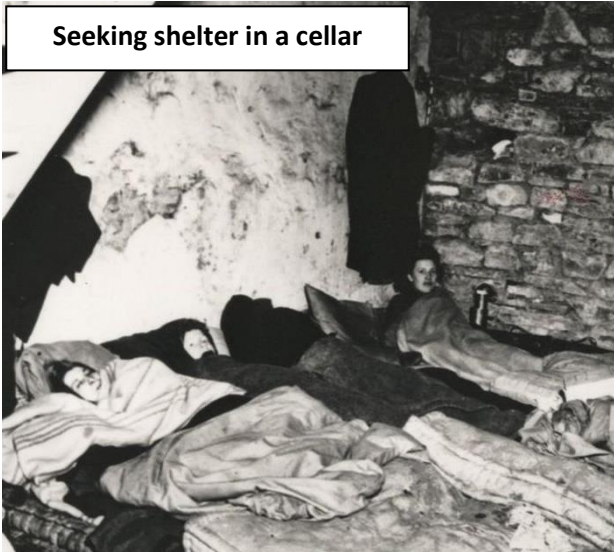
During the Battle of the Bulge, civilians suffered too. They had to decide whether to seek refuge in a cellar or to run away.

Which statements are true for which of the two groups? Connect them to the pictures below.

They had to decide quickly what to take with them and what to leave behind.

They were scared because of the artillery fire.

They had to leave their possessions behind.



They had to be outside in the freezing cold.

They didn't know whether they had enough food.

They risked running into German soldiers again.

What would you do in this situation, and why?

---

---

---

---

---